
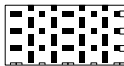




Land Use Designations

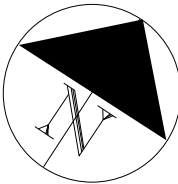
- SECONDARY PLAN No.38 BOUNDARY
-  OFFICE
-  MIXED - USE
(OFFICE & RETAIL)
-  MIXED INDUSTRIAL / COMMERCIAL

Transportation

- COLLECTOR ROAD
- MINOR ARTERIAL ROAD
- MAJOR ARTERIAL ROAD
-  TRANSPORTATION CORRIDOR

**Schedule SP38 To The Bramalea Road
South Gateway Redevelopment Area**

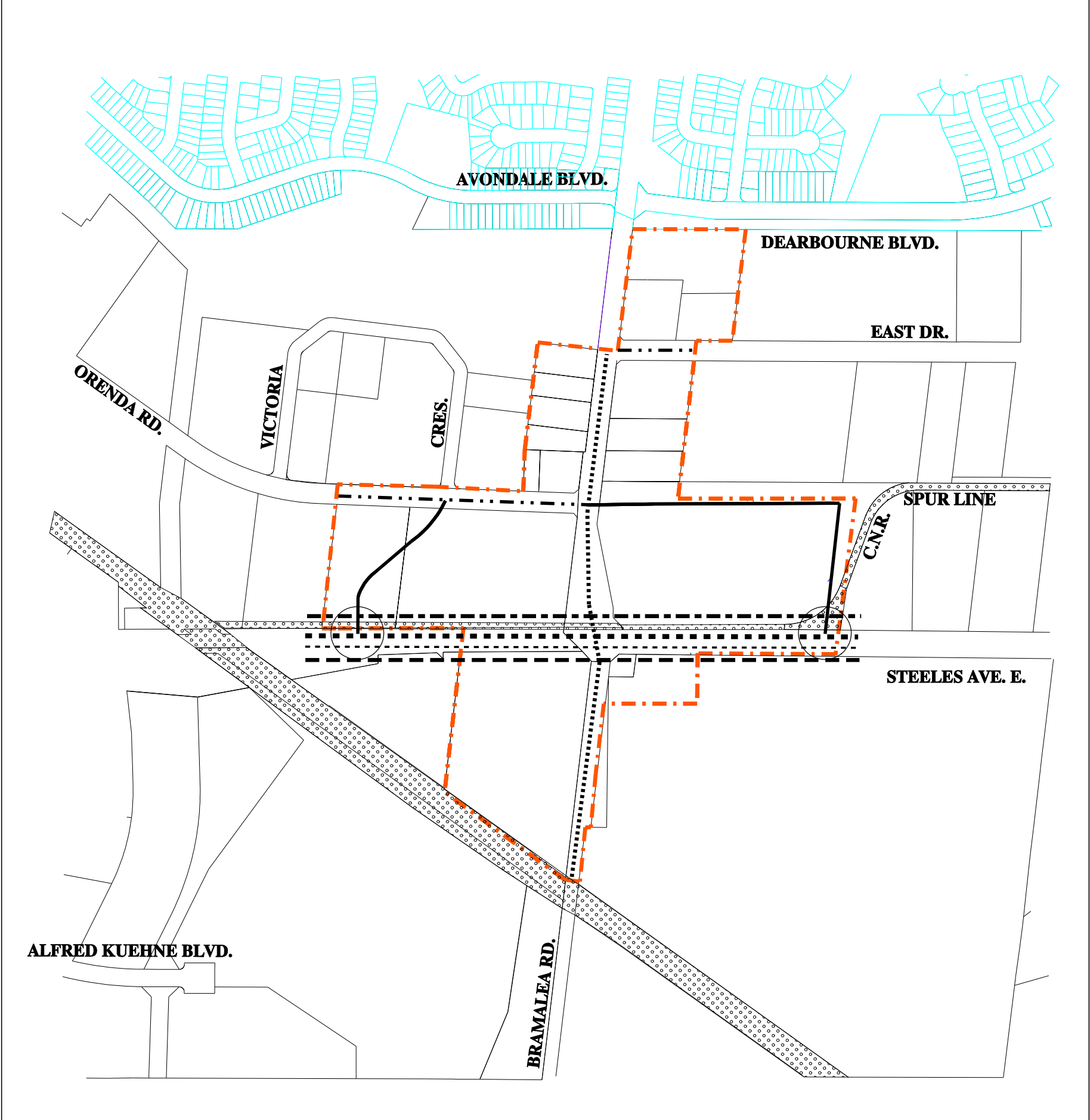
Land Use Designations



CITY OF BRAMPTON
Planning and Infrastructure Services

MODIFIED
Date: 2014 03 28
Drawn by: CJK

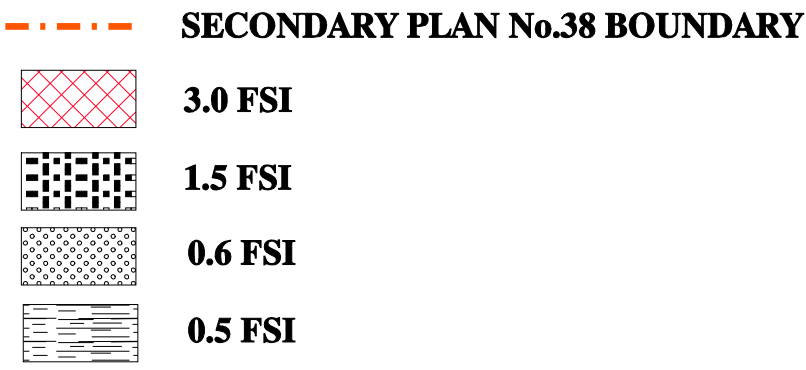
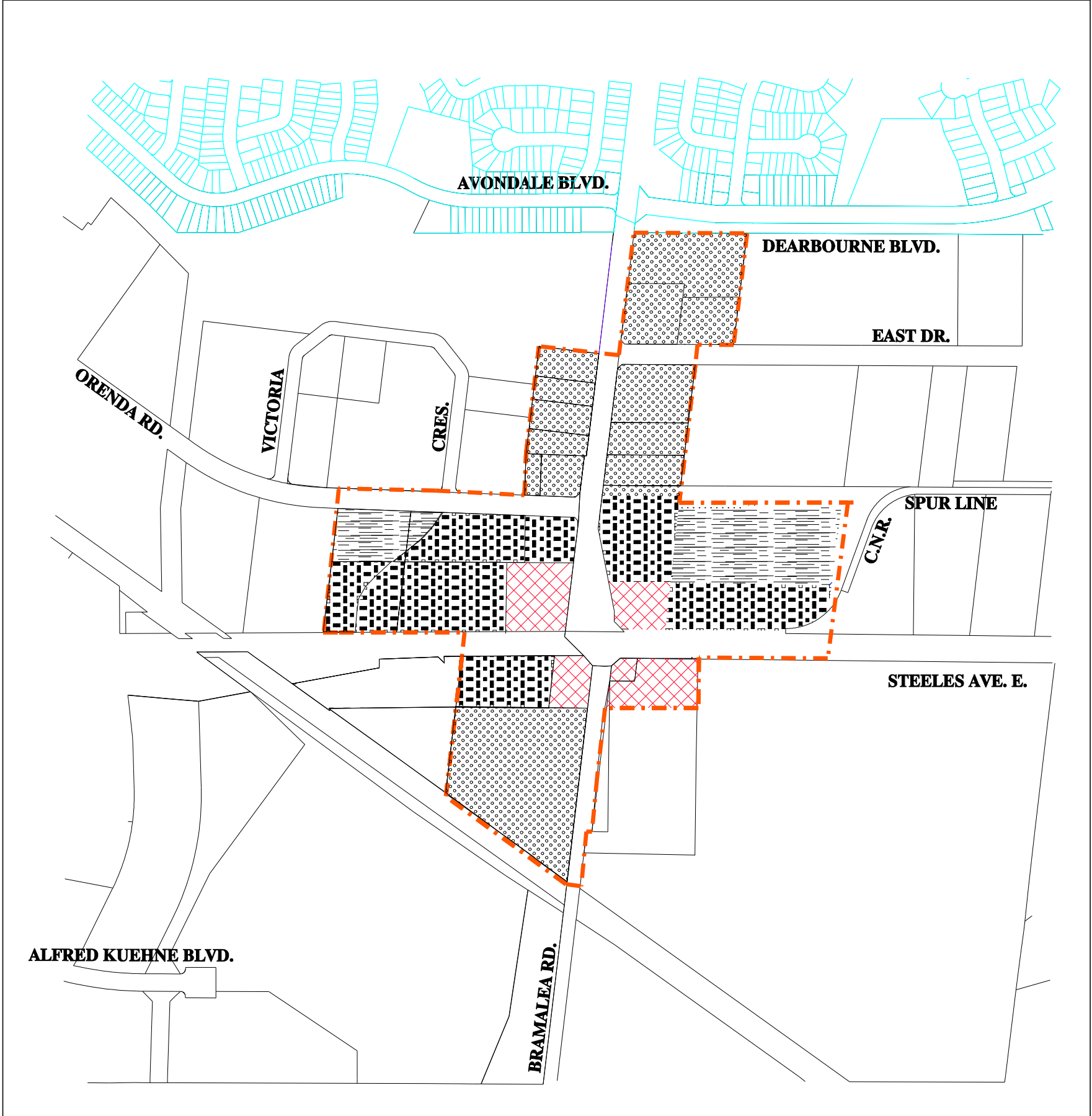
File no. SCHEDULE C SP38



Transportation Elements

- COLLECTOR ROAD
- PROPOSED COLLECTOR
- MINOR ARTERIAL ROAD
- MAJOR ARTERIAL ROAD
- HIGH OCCUPANCY VEHICLE LANE / RESERVED BUS LANE
- BICYCLE LANE
- CONCEPTUAL RAPID TRANSIT ALIGNMENT
- TRANSPORTATION CORRIDOR
- ALL MOVES INTERSECTION
- SECONDARY PLAN No.38 BOUNDARY

SCHEDULE D TO OFFICIAL PLAN Amendment Number <u>OP93-68</u>		CITY OF BRAMPTON Planning and Development	
Schedule SP38 (B) To The Bramalea Road South Gateway Redevelopment Area		MODIFIED Date: 2000 01 06	Drawn by: C.R.E.
Transportation Elements		File no.SP38_D_012000.dgn	Map no.



**NOTE: The Figures On This Schedule Show The Maximum Floor Space Index (FSI)
Assigned To The Lands Designated Mixed - Use, Office And Mixed Industrial / Commercial
Within The Bramalea Road South Gateway Secondary Plan.**